

# Pump kit

TTK 125 S / TTK 175 S / TTK 355 S / TTK 655 S  
TTK 500 / TTK 900 MP

EN

INSTRUCTIONS  
PUMP KIT



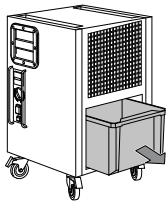
The pump kit can be installed into the following devices:

**TTK 125 S / TTK 175 S / TTK 355 S / TTK 655 S / TTK 500 / TTK 900 MP**

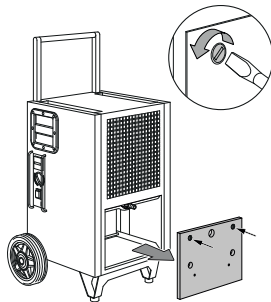
**Manual**

Proceed as follows to install the pump kit.  
Please note the differences in the installation  
of the pump kit for the TTK 655 S / TTK 500 /  
TTK 900 MP.

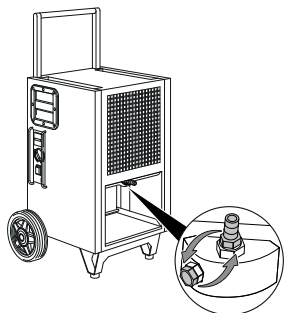
1. TTK 125 S / TTK 175 S / TTK 355 S



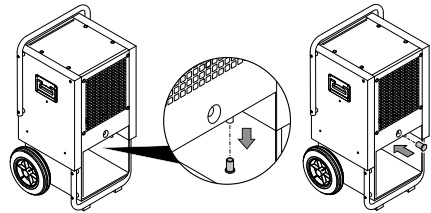
TTK 655 S / TTK 500 / TTK 900 MP



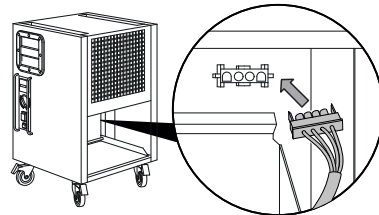
2. TTK 655 S



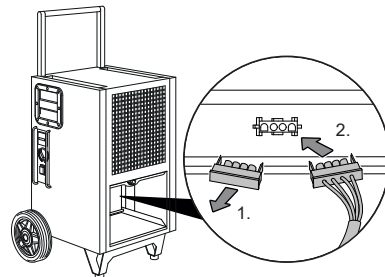
- TTK 500 / TTK 900 MP



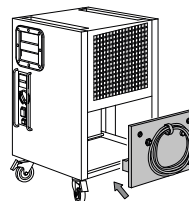
3. TTK 125 S



- TTK 175 S / TTK 355 S / TTK 655 S  
TTK 500 / TTK 900 MP



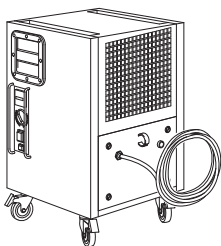
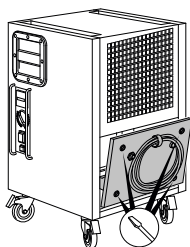
4. TTK 125 S / TTK 175 S / TTK 355 S / TTK 655 S  
TTK 500 / TTK 900 MP



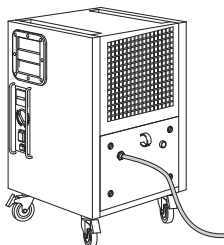
The pump kit can be installed into the following devices:

**TTK 125 S / TTK 175 S / TTK 355 S / TTK 655 S / TTK 500 / TTK 900 MP**

5. TTK 125 S / TTK 175 S / TTK 355 S / TTK 655 S  
TTK 500 / TTK 900 MP



6. Insert the long hose into a suitable container or drain.



The end of the hose must always be free and may not protrude into the water.



The container must be sufficiently dimensioned.

The pump drains the accumulated water once the small container of the pump is filled. In the event of a pump fault, the entire device switches off.

If you want to transport the device after use, the residual water draining can be used to pump out the remaining water from the device. To do so, please actuate the corresponding button. Note that in this case the device must still be connected to the mains. During transport, be aware that there may still be residual water in the hose. The pump is not able to pump out this water.

Regularly check the hoses and hose connections for dirt and clean the parts if required. You can connect the hose to the water separator of our insulation dryers (MultiQube WA 4i) or to our Qube and Qube+.

**Important:** When connecting the pump kit to the Qube, make sure that the Qube is switched on and properly functioning. If the Qube's internal pump does not deliver, the collected condensate in the Qube can flow back from the container through the suction hoses.

### Technical data

| Parameter         | Value   |
|-------------------|---|
| Power consumption | 80 W  |
| Mains connection  | 1 / N / PE ~230V / 50Hz<br>(internal via connector) |
| Delivery height   | max. 4,3 m  |
| Delivery capacity | 72 l / h at 3 m Delivery height                     |
| Pumped medium     | Condensation water only                             |
| Weight            | 2,8 kg  |

**Trotec GmbH**

Grebbener Str. 7  
D-52525 Heinsberg

☎ +49 2452 962-400

☎ +49 2452 962-200

✉ [info@trotec.com](mailto:info@trotec.com)

[www.trotec.com](http://www.trotec.com)